

## B30

## Suction cup with short bellows



- Suitable for level adjustment. Several short bellows in one lifting device can handle objects with height differences and varying shapes, for example embossed or corrugated plates.
- The lifting movement can be used to separate small and thin objects.
- Only lightweight objects should be handled when the lifting force is parallel to the surface of the object, in order to achieve good precision and safe lifting movement.

## Lifting forces &amp; Technical data

Outer Dia. in	Lifting force vertical to the surface, lbf, at vacuum level			Lifting force parallel to the surface, lbf, at vacuum level			Volume in <sup>3</sup>	Min. curve radius in	Max. vertical movement in	Weight rubber part oz
	6 -inHg	18 -inHg	27 -inHg	6 -inHg	18 -inHg	27 -inHg				
1.30	2.70	4.95	6.07	—	—	—	0.61	0.60	0.60	0.25

## Material specifications

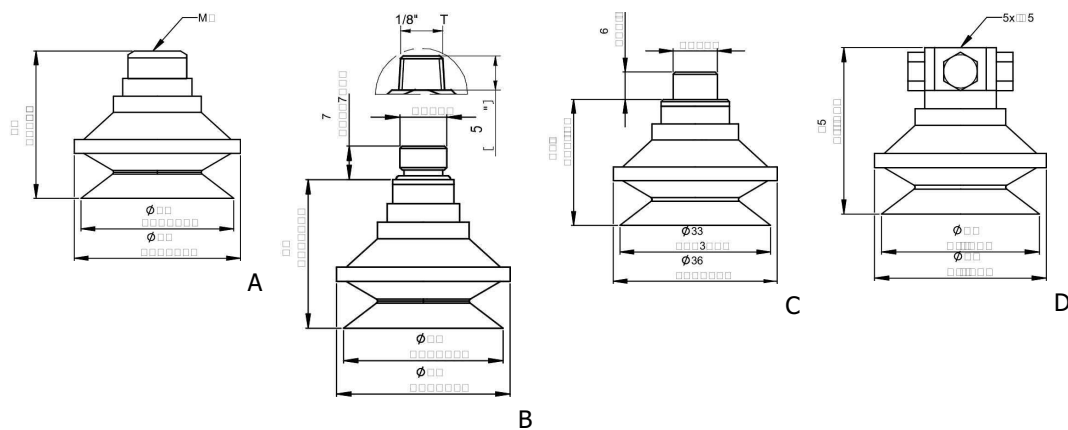
Material	Color	Hardness °Shore A	Temperature range °F
Chloroprene, CR	Black	60	-40–230
Silicone, SIL	Red	50	-40–392

## Material resistance

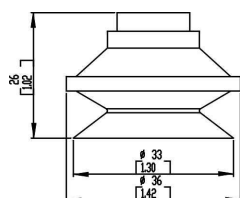
Material	Wear resistance	Oil	Weather & Ozone	Hydrolysis	Gasoline	Concentrated acids	Alcohol	Oxidation
Chloroprene, CR	Excellent	Fair	Good	Good	Fair	Poor	Good	Good
Silicone, SIL	Good	Poor	Excellent	Fair	Poor	Poor	Good	Excellent

## Ordering information

	Suction cups with fitting	Weight (oz)	Part No.
A	Suction cup B30 Chloroprene, M5 female	0.36	B30.10.02AA
A	Suction cup B30 Chloroprene, M5 female, with dual flow control valve	0.36	B30.10.02DA
B	Suction cup B30 Chloroprene, G1/8" male, with mesh filter	0.36	B30.10.02AB
B	Suction cup B30 Chloroprene, G1/8" male, with dual flow control valve	0.36	B30.10.02DB
B	Suction cup B30 Chloroprene, 1/8" NPT male, with mesh filter	0.36	B30.10.02AC
B	Suction cup B30 Chloroprene, 1/8" NPT male, with dual flow control valve	0.36	B30.10.02DC
C	Suction cup B30 Chloroprene, G1/8" male/M5 female	0.32	B30.10.02AD
C	Suction cup B30 Chloroprene, G1/8" male/M5 female, with mesh filter	0.32	B30.10.02AF
C	Suction cup B30 Chloroprene, G1/8" male/M5 female, with dual flow control valve	0.32	B30.10.02DD
D	Suction cup B30 Chloroprene, 5xM5 female	0.60	B30.10.02AE
D	Suction cup B30 Chloroprene, 5xM5 female, with dual flow control valve	0.60	B30.10.02DE
A	Suction cup B30 Silicone, M5 female	0.36	B30.20.02AA
A	Suction cup B30 Silicone, M5 female, with dual flow control valve	0.36	B30.20.02DA
B	Suction cup B30 Silicone, G1/8" male, with mesh filter	0.36	B30.20.02AB
B	Suction cup B30 Silicone, G1/8" male, with dual flow control valve	0.36	B30.20.02DB
B	Suction cup B30 Silicone, 1/8" NPT male, with mesh filter	0.36	B30.20.02AC
B	Suction cup B30 Silicone, 1/8" NPT male, with dual flow control valve	0.36	B30.20.02DC
C	Suction cup B30 Silicone, G1/8" male/M5 female	0.32	B30.20.02AD
C	Suction cup B30 Silicone, G1/8" male/M5 female, with mesh filter	0.32	B30.20.02AF
C	Suction cup B30 Silicone, G1/8" male/M5 female, with dual flow control valve	0.32	B30.20.02DD
D	Suction cup B30 Silicone, 5xM5 female	0.60	B30.20.02AE
D	Suction cup B30 Silicone, 5xM5 female, with dual flow control valve	0.60	B30.20.02DE



Rubber parts	Part No.
Suction cup B30 Chloroprene	B30.10
Suction cup B30 Silicone	B30.20



## Fittings

Part No.

Fitting M5 female	02AA
Fitting M5 female, with dual flow control valve	02DA
Fitting G1/8" male, with mesh filter	02AB
Fitting G1/8" male, with mesh filter and dual flow control valve	02DB
Fitting 1/8" NPT male, with mesh filter	02AC
Fitting 1/8" NPT male, with dual flow control valve	02DC
Fitting G1/8" male/M5 female	02AD
Fitting G1/8" male/M5 female, with mesh filter	02AF
Fitting G1/8" male/M5 female, with dual flow control valve	02DD
Fitting 5xM5 female	02AE
Fitting 5xM5 female, with dual flow control valve	02DE