

# BX10P



## BX10P

- Suitable for level adjustment and for uneven and porous surfaces such as cardboard, etc.
- In the two-colored suction cup the bellows and the sealing lip are of different hardnesses, which makes the suction cup strong and stable and, at the same time, soft and flexible.
- DURAFLEX® suction cups manufactured in a specially developed material that features the elasticity of rubber and wear resistance of polyurethane.
- The material DURAFLEX® is mark free.

### Lifting forces & Technical data

Material	Lifting force vertical to the surface, lbf, at vacuum level			Lifting force parallel to the surface, lbf, at vacuum level			Volume in <sup>3</sup>	Min. curve radius in	Max. vertical movement in	Weight rubber part oz
	6 -inHg	18 -inHg	27 -inHg	6 -inHg	18 -inHg	27 -inHg				
PU30°/60°	0.22	0.52	0.83	—	—	—	0.03	0.16	0.18	0.04
PU60°	0.22	0.52	0.83	—	—	—	0.03	0.24	0.18	0.04

### Material specifications

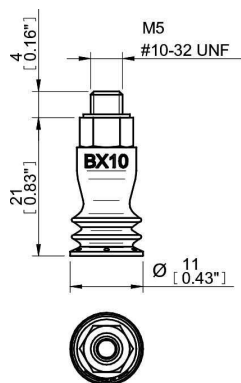
Material	Color	Hardness °Shore A	Temperature range °F
Polyurethane, PU30	Yellow transparent	30	50–122
Polyurethane, PU60	Green transparent	60	50–122

### Material resistance

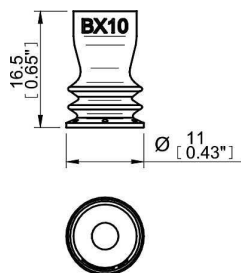
Wear resistance	Oil	Weather & ozone	Hydrolysis	Gasoline	Concentrated acids	Ethanol	Methanol	Oxidation
Excellent	Excellent	Excellent	Fair	Fair	Fair	Fair	Poor	Poor

## Ordering information

Suction cups with fitting	Weight (oz)	Part No.
Suction cup BX10P Polyurethane 30/60, M5 male	0.18	BX10P.4K.01AC
Suction cup BX10P Polyurethane 60, M5 male	0.18	BX10P.4E.01AC



Rubber parts	Part No.
Suction cup BX10P Polyurethane 30/60	BX10P.4K
Suction cup BX10P Polyurethane 60	BX10P.4E



Fittings	Part No.
Fitting M5 male, 10–15	01AC